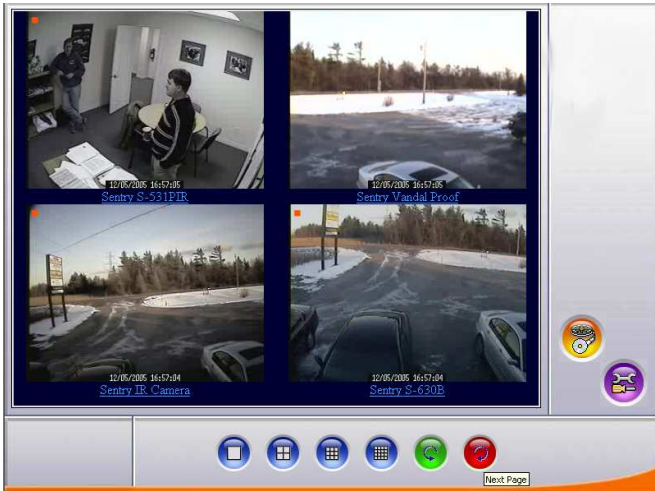


JTS - LE Series (Embedded DVRs) 120fps recording/real-time display, 4-16 Channel

Features

- 4/8/12/16 channel Linux-based embedded digital video recorders
- Embedded software/OS (no software on hard disk), for maximum reliability
- Simple, plug & play installation
- Infra-red remote control, on-screen programming or mouse/keyboard control
- Selectable 320x240 or 640x480 image resolution selectable by camera.
- H.263 compression provides high compression (2KB frames) with excellent quality.
- Up to 120 frames/sec, recording and 480frames/sec (real-time) display
- Manages storage and recycles space automatically.
- Simultaneous viewing, recording, playback and remote access
- Remote access by LAN, internet and dial-up are supported by standard browser.
- Easy-to-use back-up to DVD-RW/CD-RW drive is provided for critical events.



Description - The LE Series of embedded digital video recorders (DVRs) provide high quality, reliable, plug-and-play digital video security solutions. The LE Series supports up to 16 cameras, with real-time display and up to 120fps recording; 1.5TB of video storage can be installed providing up to three months of continuous footage. Video is optimally compressed (2KB frames with H.263 compression) yet still provides superior quality. Some models can be easily upgraded by adding additional camera input boards. Remote access speeds are also optimized due to the small frame size. The LE Series DVRs support alarm input and output devices, allow control of different protocol PTZ cameras, and feature remote monitoring (live or recorded video), remote recording and viewing by multiple clients simultaneously. The advanced motion detection feature allows the definition of multiple motion detection zones per camera. Several methods of notification about intrusions or abnormal situations are provided. The Linux-based operating system and software is embedded on a chip instead of written on a hard drive ensuring a high level of stability, security and long-term reliability. New versions of firmware can be uploaded into the DOM.

LE DVR SPECIFICATIONS	
Model	LE/04, LE/08, LE/12, LE/16
Software	Hardware embedded Linux-based operating system and software.
Hardware	120GB (expandable) hard disk, DVD-RW/CD-RW drive, 10/100 LAN adapter, Infra-red remote controller, keyboard and mouse.
Video Compression	H.263, MPEG4, MJPEG, JPEG (H.263 compressed frames are 1/7 th the size of JPEG and use less processing power than MPEG4. H.263 frames at 320x240 resolution average 2KB yet provide superior video quality.)
Video Inputs	4, 8, 12, 16
Audio Inputs	1
Recording Resolution	320x240, 640x480
Event Recording	Video motion, scheduled recording or continuous
Recording Speed	120fps (MJPEG)
Monitor Output	1 VGA Port
Remote Access	Internet, Intranet and direct dial-up
Hard Disk Usage (H.263 @ 320x240)	14GB/day continuous recording.
Weight	25 lbs/45lbs.
Options	Additional and/or larger disk drives (up to 6 HDD in LE/16). External modem. RS485 to RS232 PTZ protocol converter. 4 in/4 out alarm input/output module.
Standard Warranty	1 year parts and labor, 1 year toll free technical support. Extended warranties available.